

3-Part Action Plan

Our goal is to raise \$6M toward a park. This plan follows up on Malden's three referendum Yes votes on November 3, 2015:

- Yes: Development Moratorium **3 to 1**
- Yes: Acquire Hospital site **3 to 1**
- Yes: Community Preservation Act **3 to 2**

- Malden and Medford apply for \$2M state LAND, PARC, and GATEWAY grants.**
- Both cities allocate a portion \$2M from their newly adopted Community Preservation Act.**
- Inspire local business, foundation, and corporate giving by the enthusiasm of families, individuals, and civic groups running neighborhood fundraisers.**

A United Effort

This plan asks everyone—residents and elected leaders of both Medford and Malden, community groups, and families—to come together and say:

**Yes, let's make this happen.
Yes, we'll do our part.**

Why Voters Oppose High-Density Housing

Malden has overcrowded schools and unchecked development. Malden has the second lowest open space percentage in greater Boston. Both Medford and Malden have major traffic overload morning and evening in the neighborhood of the hospital site and cannot absorb the over 500 cars which would result from a proposed 375-unit development. Current zoning allows for only 60 to 80 units, which would still burden our already congested roads.



Why We Propose Community Space

The landscape design (right) shows an initial proposal developed by Friends of Fellsmere Heights (FoFH) in public meetings. More community input is welcome toward a final plan, a permanent name for Fellsmere Community Park, and for fundraising proposals.

Please email your ideas to:
info@fellsmereheights.org.

The Possibilities Outdoor Space

- Multi-use Playing Field
- Walking and Biking Paths
- Picnic Areas and Bandstand
- Community Gardens

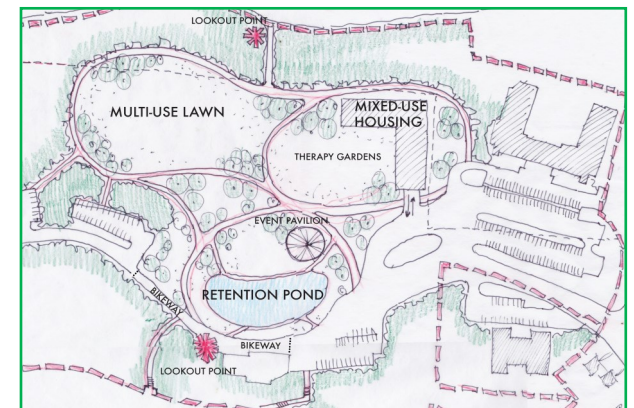
Lookout Tower with Panoramic View

This park could be managed and owned by a national, state, or regional park trust.

Community Building

- Arts Center and Meeting Space
- Business Innovation Space
- Moderate Income Senior Housing
- Recreation Center
- Wellness Center

This community building could be financed, designed and operated by partnering with an independent owner/investor.



A United Desire in Both Cities

Many voices in Malden and Medford have spoken up. On June 3, 2015, over 200 people at a public meeting voted overwhelmingly for the hospital site to remain in service to the community as its founders intended. Since then, the Malden City Council has not granted zoning variance permits for the housing project. Nearly 1000 signatures have been collected in support of open space vision for the site. In 2016, a Medford City Council subcommittee was formed to seek a future for the hospital site that benefits the community.



The 100-Year Converse Legacy and the Lantern Walk

The hospital land resides in both cities. It was donated to benefit both communities by the first Malden Mayor, Elisha Converse. On June 4, 2016, about 150 people joined a lantern walk to celebrate that legacy and to celebrate the hope that our collaboration will keep it alive.

They Did It

We Can Do It

The people of Aspinwall, PA had a year to raise \$2M to rescue 10 acres from development and build Riverfront Park on the Allegheny River. Grassroots fundraising got things started and inspired local business, foundation, and corporate giving. And they did it!!

Join the Medford-Malden Collaboration

American Association for Arab Women

Malden Senior Action Council

Chinese Culture Connection

YODA (Young Optimistic Daring Activists)

Friends of Fellsmere Heights

How to Join

- Become an organizational collaborator
 - Initiate a fund raising activity
 - Donate:
 - online at www.fellsmereheights.org
 - via mail
- Friends of Fellsmere Heights
54 Bowers Ave, Malden MA 02148

FoFH is a 501(c)(3) non-profit.



**MALDEN
MEDFORD**

OPEN & INCLUSIVE SPACE
FOR OUR COMMUNITY
www.fellsmereheights.org

Community in Action

A Medford-Malden
COLLABORATION
to create

Fellsmere Community
Park

Because the 18-acre Malden Hospital site is well-suited to meet a wide range of community needs, and a developer wants it for more high-density housing

